



TRANSPORTATION CABINET

Frankfort, Kentucky 40622
www.transportation.ky.gov/

Steven L. Beshear
Governor

Michael W. Hancock, P.E.
Secretary

April 17, 2012

CALL NO. 354
CONTRACT ID NO. 121313
ADDENDUM # 2

Subject: Hardin County, JP02 047 NEW-ROUTE
Letting April 20, 2012

(1)Added - Plan Sheet - R11A

Proposal revisions are available at <http://transportation.ky.gov/Construction-Procurement/>.

Plan revisions are available at <http://www.lynnimaging.com/kytransportation/>.

If you have any questions, please contact us at 502-564-3500.

Sincerely,

A handwritten signature in blue ink that reads "Ryan Griffith".

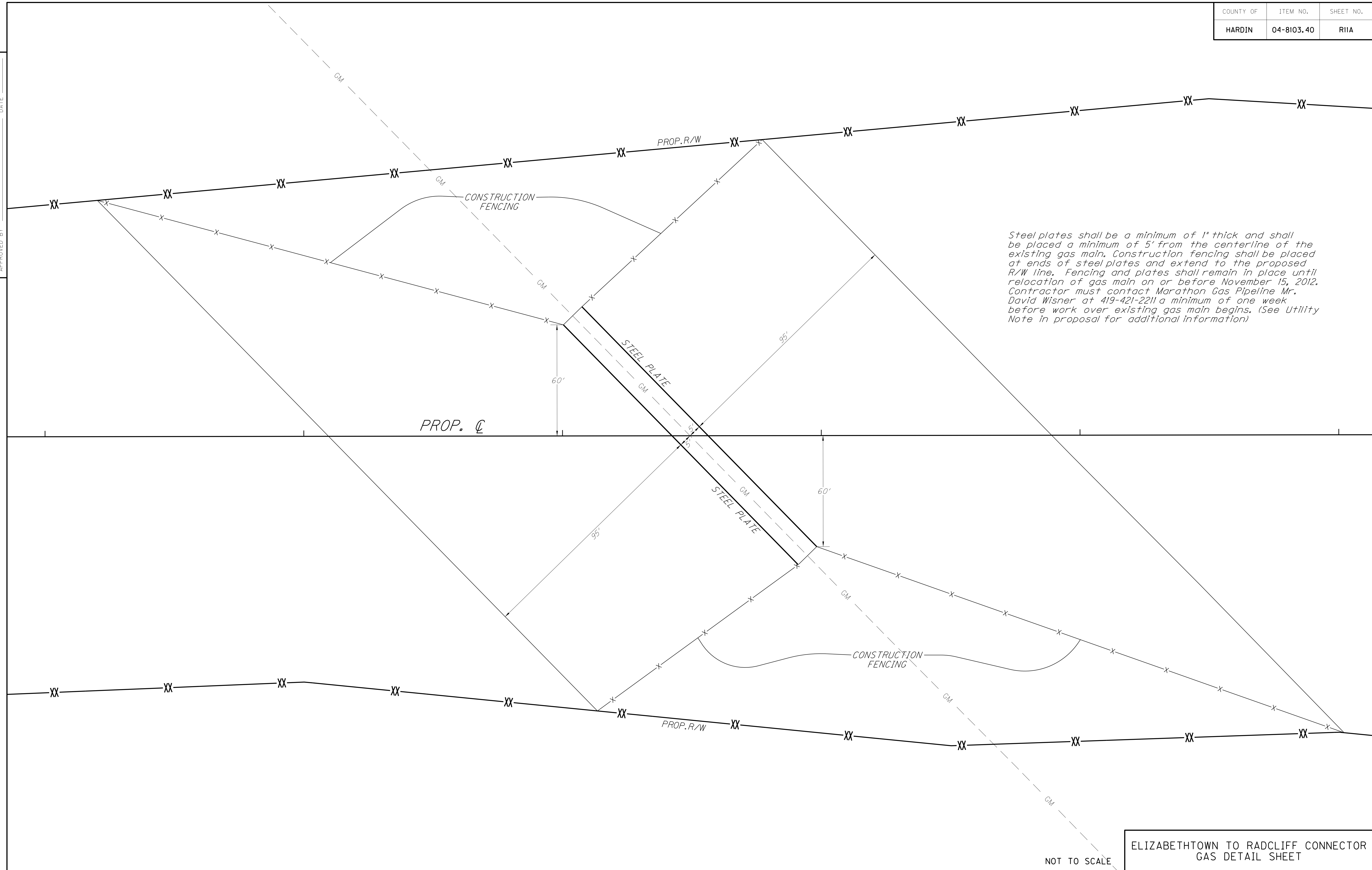
Ryan Griffith
Director
Division of Construction Procurement

RG:ks
Enclosures



An Equal Opportunity Employer M/F/D

PREPARED BY _____ DATE _____
 CHECKED BY _____ DATE _____
 APPROVED BY _____ DATE _____



Steel plates shall be a minimum of 1" thick and shall be placed a minimum of 5' from the centerline of the existing gas main. Construction fencing shall be placed at ends of steel plates and extend to the proposed R/W line. Fencing and plates shall remain in place until relocation of gas main on or before November 15, 2012. Contractor must contact Marathon Gas Pipeline Mr. David Wisner at 419-421-2211 a minimum of one week before work over existing gas main begins. (See Utility Note in proposal for additional information)

USER: \$\$\$USER\$\$\$
 DATE: \$\$\$DATE\$\$\$
 FILE NAME: \$\$\$designsfilespecifications\$\$\$
 E-SHEET NAME: